

Single Point Level Switches LS-7, LS-1050E



Small Size - Compact Alloy and Alloy Plastics Side Mount

Built for durability, our LS-7 Series switches utilize stainless steel, zinc or aluminium bodies. Ideal for any small tank or vessel destined for a rugged development.



Type 6

External Mounting



Type 8

External Mounting



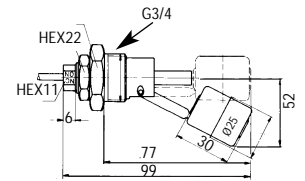
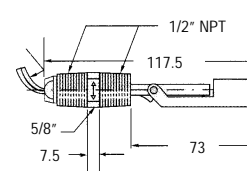
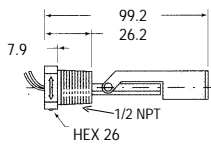
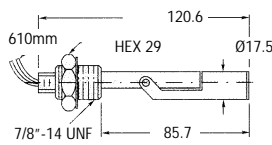
Type 9

External Mounting



LS-1050E

External/Internal Mounting
For up to 20mm wall
(Hole Ø 17mm)
Internal Mount



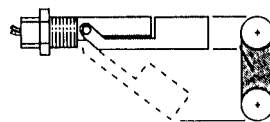
Specifications

	Type 6	Type 8	Type 9	LS-1050E
Materials				
Stem/Mounting	Aluminium	Zinc	316 S Steel	Brass
Float	Nylon*/Polysulfone	Nylon*/Polypropylene**	316 S Steel/Nylon*/Polypropylene**	S Steel
Lead Wire Jacket	PVC	TPE***	TPE***	PVC
Min. specific gravity of the liquid	0.65 Nylon 0.75 PSU	0.65 Nylon 0.55 PP	0.80 S Steel 0.65 Nylon 0.55 PP	0.7 S Steel
Operating Temperature	121°C Nylon -40°C to 107°C PSU	120°C Nylon 107°C PP	149°C S Steel 121°C Nylon 107°C PP	-100°C
Operating Pressure Max.	7 bar Nylon 10 bar PSU	7 bar Nylon 10 bar PP	20 bar S Steel 7 bar Nylon / PP	16 bar
Switch SPST	10 VA	20 VA	20 VA	50 VA
Lead Wire Gauge (Approx 0.6m long)	22 AWG	22AWG	18 AWG	Cable 0.34mm ² (approx 1m long)
Float Arc	36mm	36mm	36mm	36mm
Protection Rating	IP64	IP65	IP65	IP65
Weight approx	150g	150g	150g	300g

*** Thermoplastic Elastomer Zip Cord * Not suitable for long term use in water. ** Not suitable for Hydrocarbons

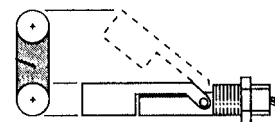
By rotating the switch 180°, the switch operation can be Normally Open or Normally Closed.
Arrows on exterior of mounting indicate NO when pointing up.
When the switch is mounted so that the float rises with the liquid level, the switch is NC.
When the switch is mounted so that the float lowers with the liquid level, the switch is NO.

Normally Open



When the switch is mounted so that the float lowers with the liquid level, the switch is NO

Normally Closed



When the switch is mounted so that the float rises with the liquid level, the switch is NC

Order data

	Type 6	Type 8	Type 9	LS-1050E
Nylon Float	155660	160950	164850	
Polysulfone Float	155680			
Polypropylene Float		162795	164860	
S Steel Float			164870	011-1050

Meyer Industrie-Electronic GmbH - MEYLE

Carl-Bosch-Straße 8
49525 Lengerich/Germany
Internet: www.meyle.de

Tel.: (+49) 0 54 81/93 85-0
Fax: (+49) 0 54 81/93 85-12
E-Mail: sales@meyle.de